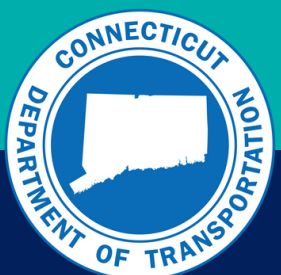




I-95 Greenwich PEL Study

Riverside Association Annual Meeting
January 25, 2024



Agenda

Welcome and
Introductions

1

Project
Background

2

What is a
PEL Study?

3

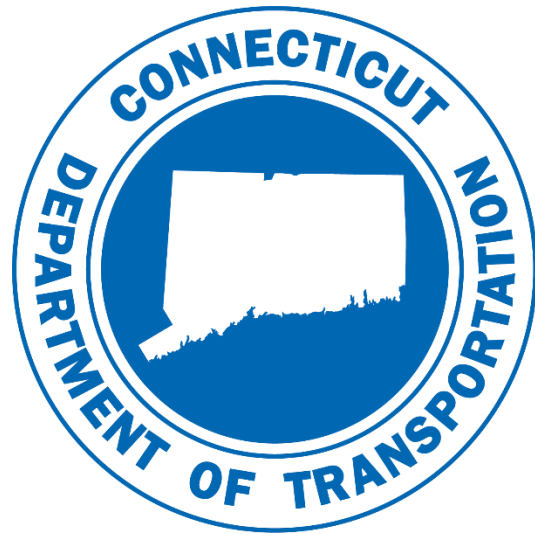
I-95 Greenwich
PEL Study
Introduction

4

Discussion

5

Welcome and Introductions



- **CTDOT**
 - Michael Calabrese, PE, Division Chief of Highway Design
 - Nilesh Patel, PE, Principal Engineer
 - Jonathan Dean, PE, Project Manager
 - Joseph Belrose, EIT, Project Engineer

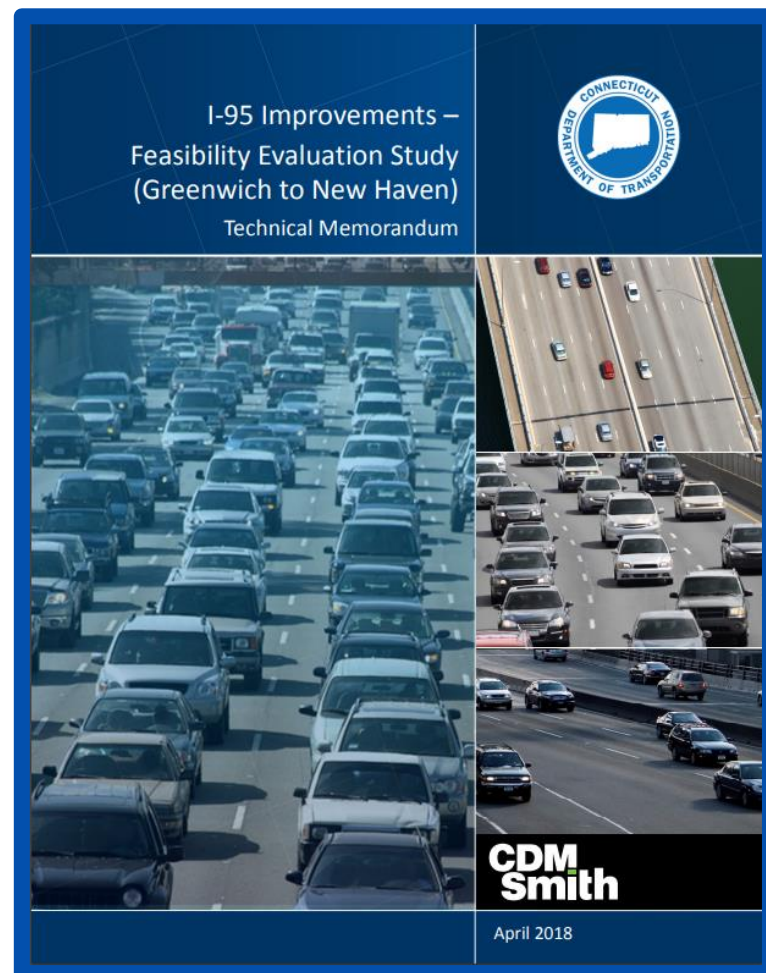
- **CDM Smith**
 - Becca Hall, PE, PTOE, RSP2I, PMP, Project Manager
 - Krista Goodin, AICP, Deputy Project Manager
 - Joe Scalise, PE, Project Director
 - Marian Hull, Outreach Lead



Project Background

April 2018

I-95 Improvements –
Feasibility Evaluation Study,
Greenwich to New Haven



April 2019

Strategic Implementation
Plan I-95 West Corridor, NY to
New Haven



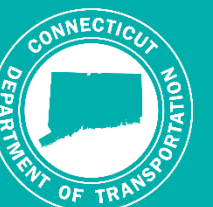
Next Step

PEL Study – Building a
framework for projects
moving forward





What is a Planning and Environment Linkages (PEL) Study?



What is a PEL Study?

**EFFICIENT
TRANSPORTATION
PROJECT DEVELOPMENT**



**COLLABORATIVE
& INTEGRATED APPROACH TO
DECISION-MAKING**



**CONSIDERS ENVIRONMENT,
COMMUNITY & ECONOMY**



WHO PARTICIPATES?
Local, State & Federal Agencies
Resource Agencies
You!

What are the Benefits to a PEL study?

Combines planning,
engineering, and
environmental review

Encourages early,
meaningful public
engagement

Considers local needs and
priorities

Provides a clear
direction forward

Decisions and analysis
inform future project
development

Reduces delays in
implementation

What are the steps in the PEL Process?

Identify
Transportation
Needs



Develop
Purpose &
Need



Develop
Screening
Criteria



Develop &
Screen
Concepts



Identify
Reasonable
Alternatives



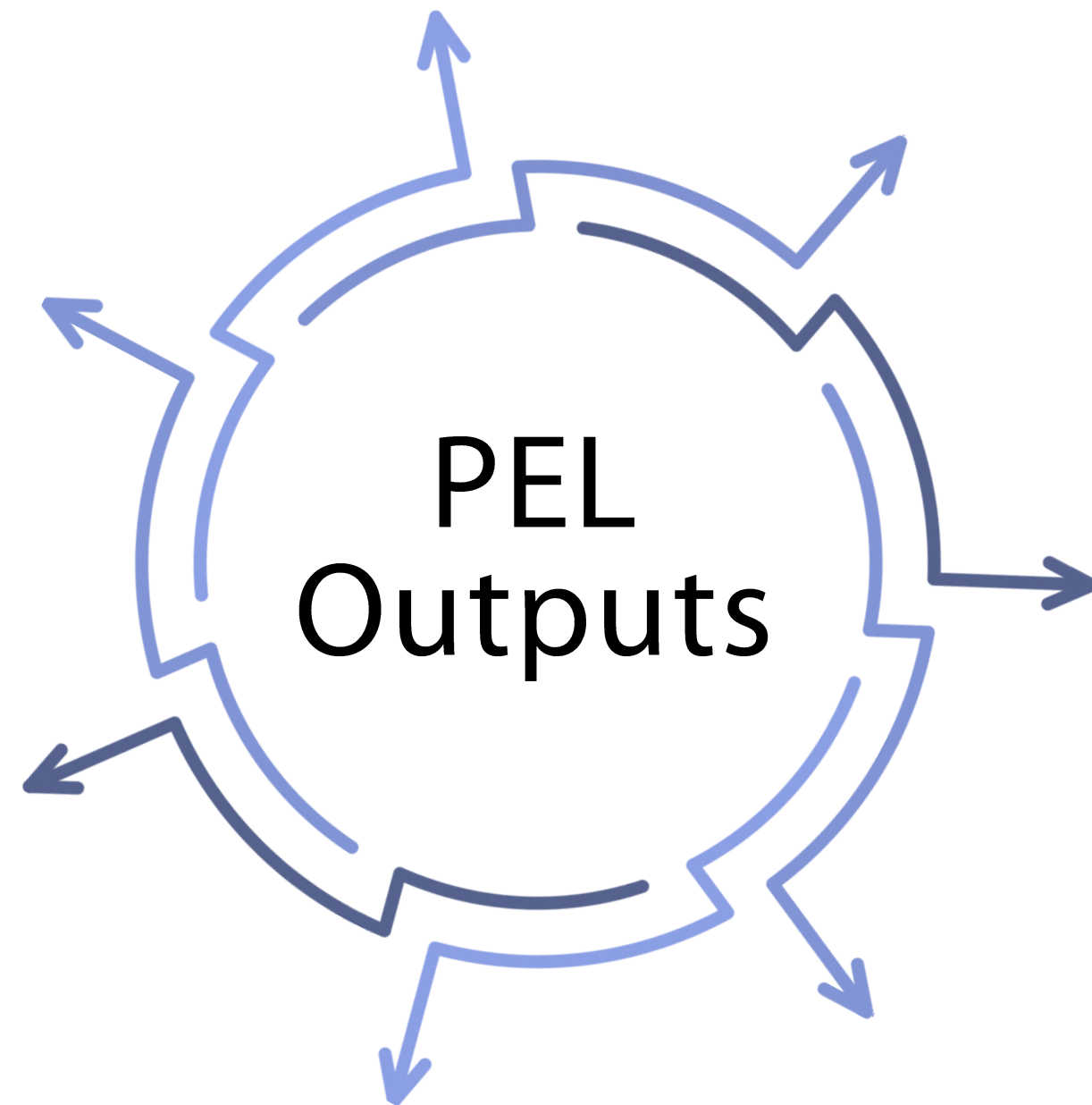
Draft,
Final
Study



Public Engagement

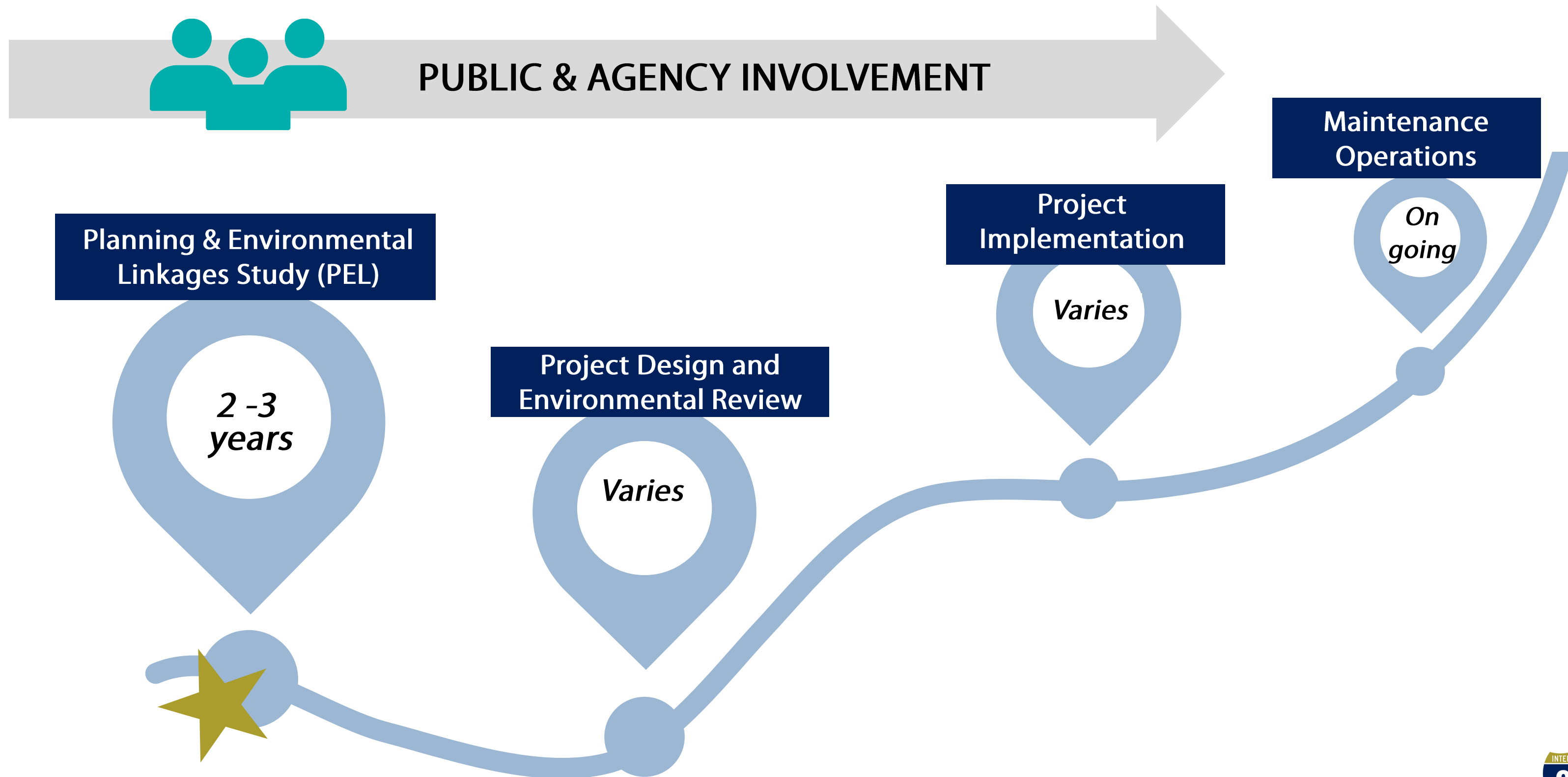


What are the Outcomes of a PEL Study?



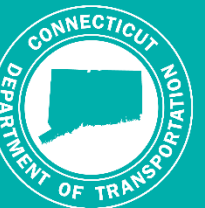
- Purpose and need
- Reasonable alternatives
- Preliminary impacts, potential permits, and mitigation assessment
- Engaged/educated public and resource partner agencies
- Action plan
- Early action / break out projects
- FHWA and CTDOT acceptance

How does a PEL Study transition to projects?

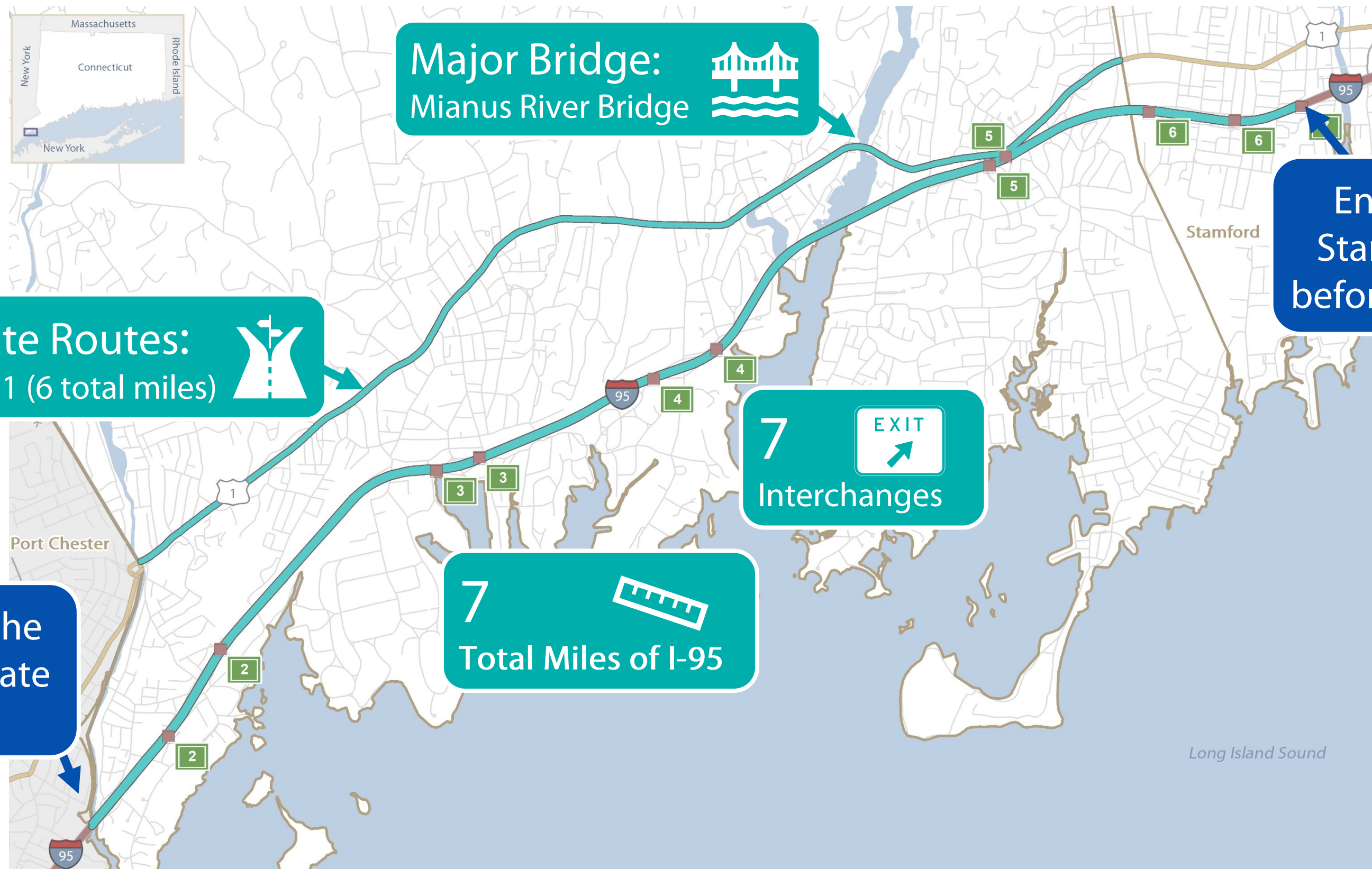




I-95 Greenwich PEL Study Overview



Study Area



Major Bridge:
Mianus River Bridge



Alternate Routes:
US Route 1 (6 total miles)



Ends in
Stamford
before Exit 7

7
Interchanges



Beginning at the
Connecticut state
line

7
Total Miles of I-95



Study Focus Areas

Transportation Analysis

- Safety
- Mobility
- Congestion

Environmental Analysis

- Natural & historic resources
- Community resources

Work to Date - Traffic Data Collection



Counts collected

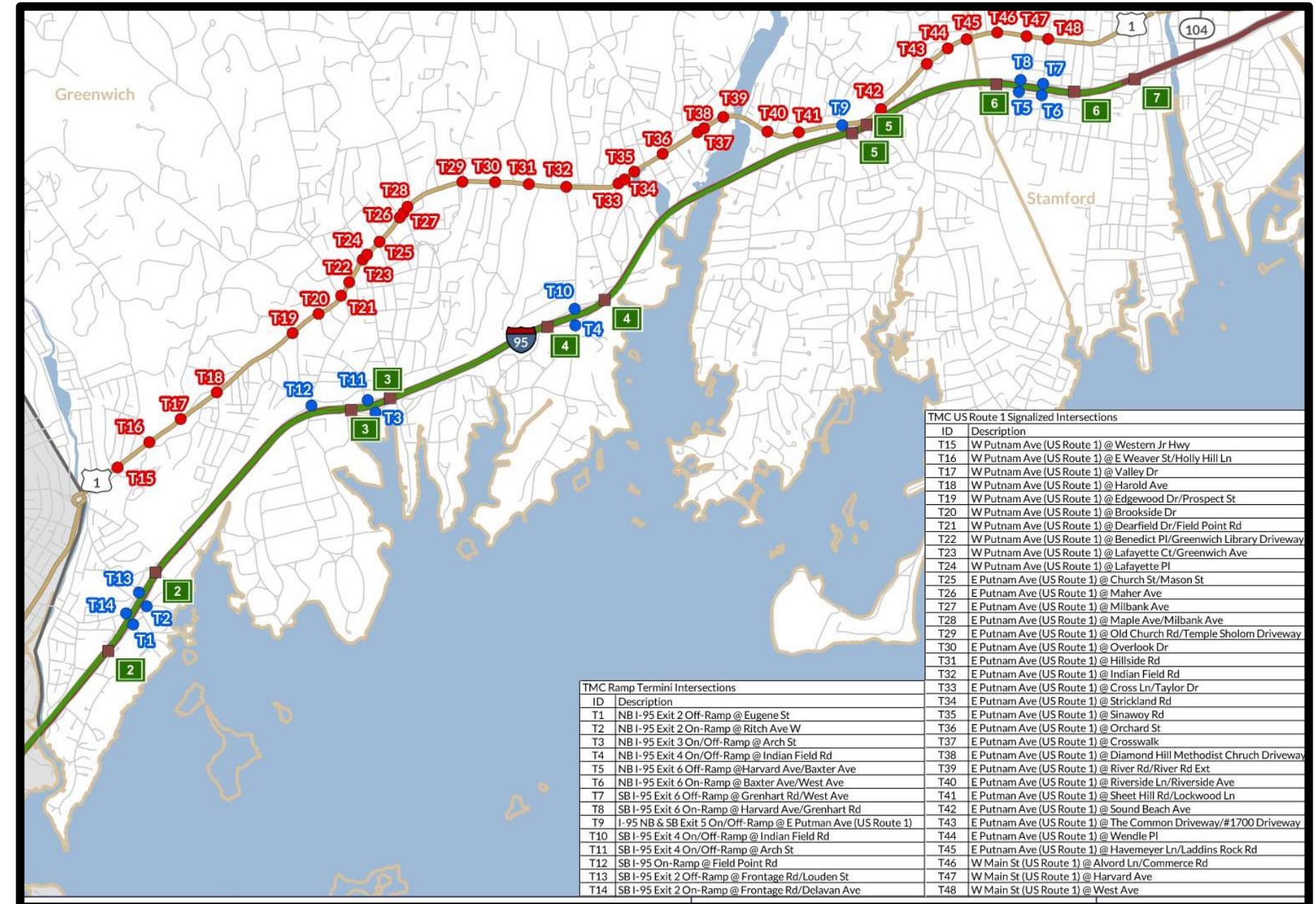
- Mainline
- 29 Ramps
- 48 Intersections



Vehicles per day*

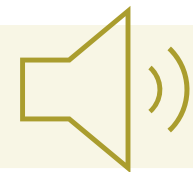
I-95: 135,000/day

US Route 1: 17,000/day

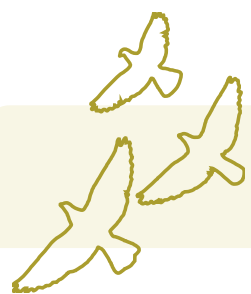


* Based on data collected in October/November 2022

Key Environmental Considerations



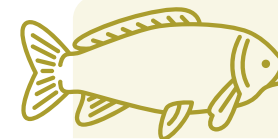
Noise



Air Quality



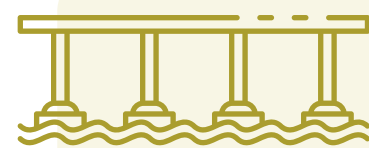
Public parks,
recreational areas,
and wildlife/
waterfowl refuges



Threatened and
Endangered species



Historic
properties



Floodplain and
channel crossings



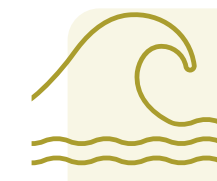
Stream
segments



Environmental
Justice



Tidal flooding
and storm surge



Wetlands and
water resources



Noise Evaluation Process

During I-95 Greenwich PEL

If projects are initiated from the PEL and identified as a Type I these are the next steps:

Existing Noise Conditions

Identify existing noise levels



Traffic Noise Model

Traffic Noise Model calculates existing and future noise levels



Identify Noise Impacts

Model results identify existing and future noise level impacts



Consider Noise Abatement Measures

Evaluates if abatement is reasonable and feasible



Federal regulations 23 CFR 772 require CTDOT to conduct noise analysis and consider the impacts of a highway expansion project on nearby residents when a project is developed with federal funds



Focus on Engagement



How we will use what we learn

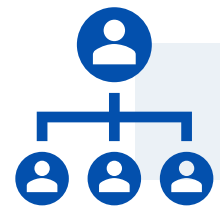




What we've heard



11 Stakeholder Meetings



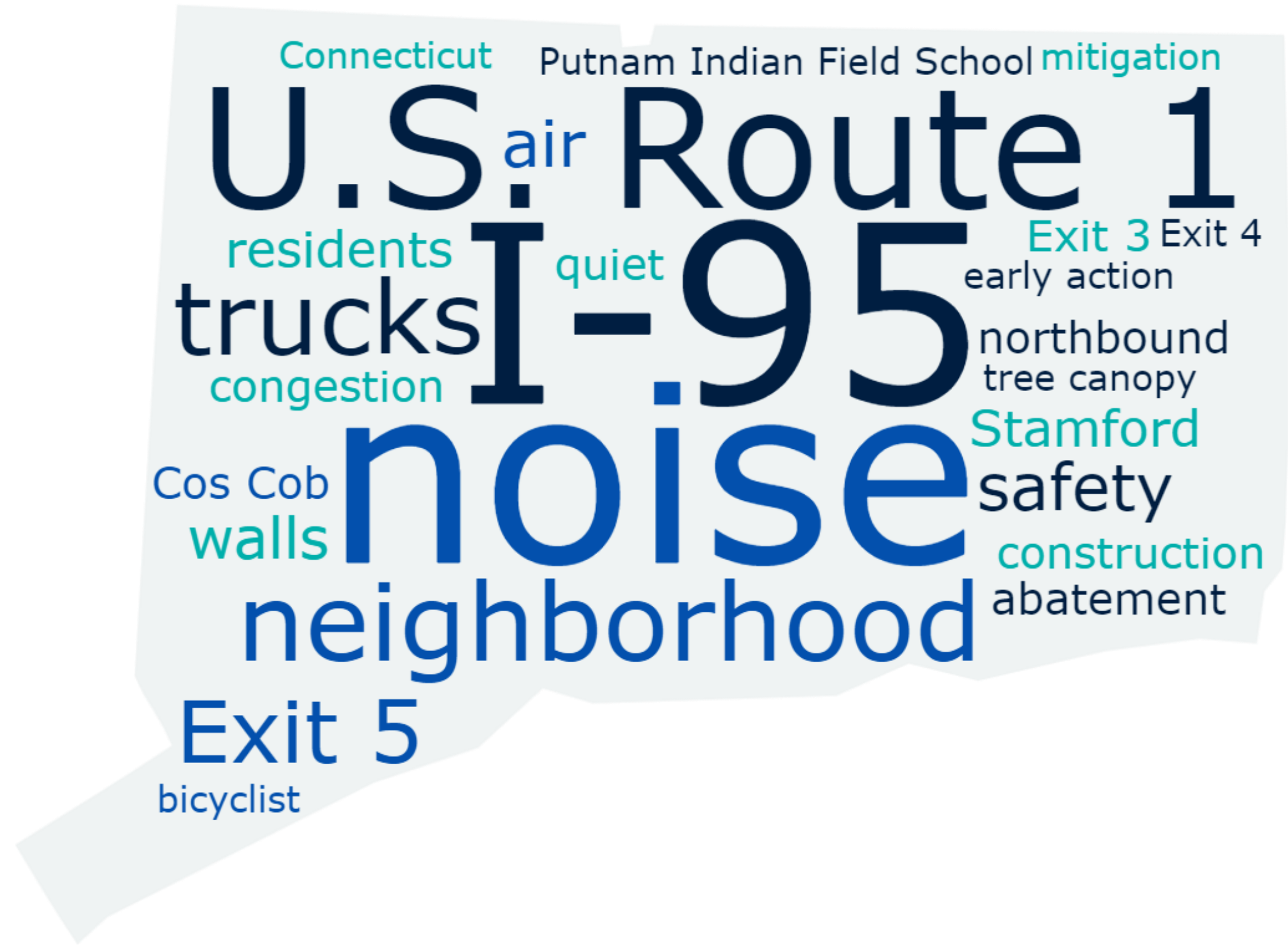
18 Organizations Represented



108 Community Members Attended



8 Community-Based Organizations Reached



Project Advisory Committee



Residents



Emergency service providers



The Town and planning organizations



Churches and social services providers



Community and neighborhood organizations



Local Businesses

Overall Project Schedule

June 2023 2024 2025 December 2025



Collect and Analyze Data



Identify Transportation Needs



Screening Criteria



Identify Reasonable Alternatives



Draft Preliminary Purpose & Need



Concept Development



Draft, Final PEL Study



Public Involvement Throughout

Next Steps (12- to 18-month timeframe)

Existing
Conditions
Analysis

- ✓ Noise Assessment
- ✓ Traffic
- ✓ Roadway
- ✓ Environmental
- ✓ Safety
- ✓ Mobility

Public and
Stakeholder
Outreach

- ✓ Stakeholder Meetings
- ✓ Form a Project Advisory Committee
- ✓ Pop-up Events
- ✓ First Public Meeting

Draft
Purpose
and Need

Stay Engaged!



www.I95Greenwich.com



(203) 806-0804



@I95Greenwich



info@I95Greenwich.com